

PERUNDING TRAFIK KLASIK

TRANSPORTATION PLANNING &
TRAFFIC MANAGEMENT



Providing Traffic & Transport Consultancy Services since 1994
Selangor



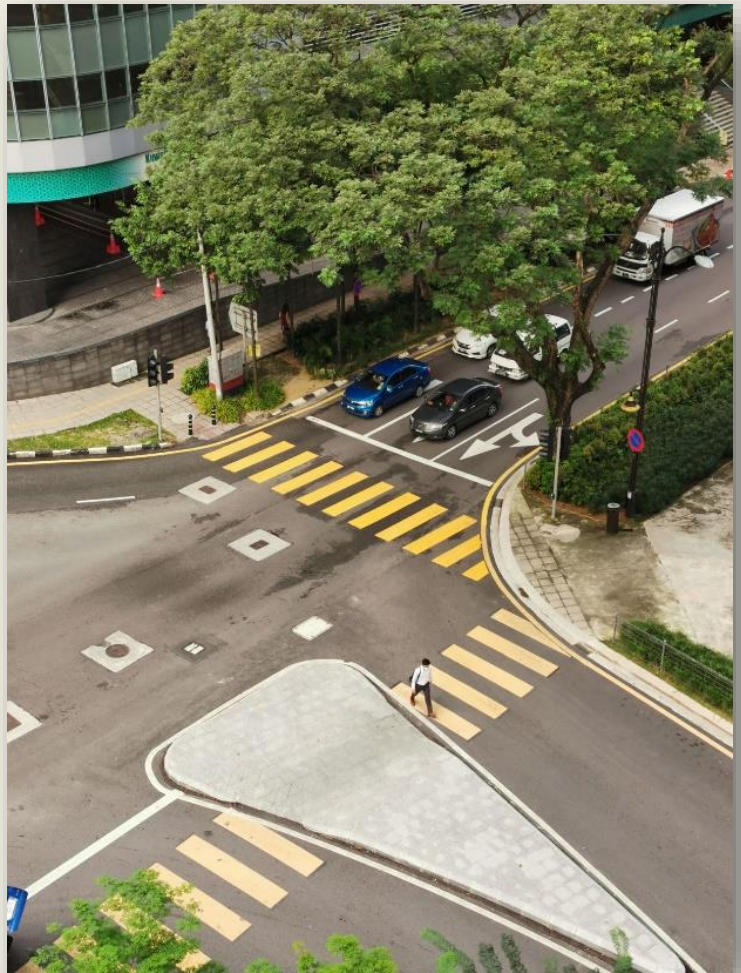
Learn more about us here:

www.ptk.my
trafik@ptk.my
+603 7932 3266

About Us

Perunding Trafik Klasik (PTK) Sdn Bhd is a Transportation Planning & Traffic Management Consultancy in Malaysia. PTK draws its expertise and skills from the collective knowledge, experience, and commitment of a team of professional transport planners and traffic engineers.

Our philosophy is to ensure an effective blending of our transportation planning knowledge and expertise with the deployment of advanced computing facilities and software for the success of our projects.



Perunding Trafik Klasik (PTK) was founded by Dr. Tai Tuck Leong in 1994, and since then it has grown from a company of five to an organisation of close to 30 personnel and has become a leading Transportation Consulting firm in Malaysia.

The PTK team is well qualified academically and has widespread exposure to the state-of-the-art technology through post-graduate studies, research, conference attendance etc. The team consists of a Chairman with a PhD degree, three with M.Sc in Transport Planning, one with an M.Phil in Economics, and the others with either Civil Engineering or a Town Planning degree. Since its inception in 1994, the team has propelled PTK to become a dynamic and foremost consultancy in transportation planning in this country.



Our Vision

Traffic engineering focusses on the traffic and transport solutions to best facilitate movement of traffic and people. PTK offers more than 25 years of experience on traffic and transportation solutions from small to large scale development projects.

Our Vision is to provide a systematic and strategic approach in traffic problem solving while embracing the changing mobility landscape focusing more on public transportation and urban mobility.

A balanced approach between motorised and non-motorised forms of transportation must be a priority to enhance the livability of any development. This can only be achieved by giving the right amount of priority to each mode of transport and understanding the concept of shared space for all forms of transport.

What We Do?

Members of the team have extensive local and international experience in transport planning, traffic management, transport information system technology, transport project economic analysis, and highly technical and advanced computing skills. We have excellent local knowledge of the transportation sector in Malaysia and a comprehensive appreciation of the available transport database in the country.

We are constantly keeping abreast with developments in the Transportation and associated Information Technology disciplines to provide the best of services to all our clients. Our emphasis on professionalism, innovation and efficiency have ensured a continual growth in our stature and eminence in the country. And we have taken upon ourselves a mission to uplift the standard of transportation planning in the country which would lead to a more sustainable and people-oriented environment.



Traffic Impact Assessment

Single plot development
Traffic management plan (TMP) during construction
Traffic circulation management



Transport Masterplan Studies

Masterplan Development with Multiple Plots
Local Area Transport Modelling
Public Transport Planning
Non-Motorised Transport Planning



New Road & Highway Studies

Toll Volume Forecast
Interchange Capacity and Design
Traffic Impact Assessment on Highway Connections



Public Transport Studies

Bus and Rail Ridership Forecast
Traffic Impact Assessment on Transit Stations
Traffic Layout Studies for Transit Stations
Transport Modal Share Studies
Transport Hub Studies



Traffic Circulation Studies

Change & Closure of Traffic Circulation
Traffic Management Schemes
Internal Carpark Circulation & Boom Gate Analysis



Strategic Studies

Strategic Local and Nationwide Transport Planning
Central Business District Traffic Policies
Evaluation of Transportation Projects



Special Studies

Parking Studies and Analysis
Trip Generation Studies
Highway Capacity Studies
Traffic Origin – Destination Studies



3D Traffic Simulation & Traffic Analysis Software

TRACKS Transport Modelling Software
VISSIM Microscopic Traffic Simulation
SIDRA Intersection and Network Analysis
SWEEP Vehicle Swept Path Analysis

We Deliver Our Best

Our traffic studies are specifically formulated for each study area and are guided by traffic study guidelines. The traffic studies will provide specific traffic analysis as and when needed.

Traffic Study Guidelines and References

Arahan Teknik Jalan (ATJ) 38/2018: Guidelines to Traffic Impact Assessment (TIA)
REAM GL 10/2011 Guidelines for Traffic Impact Assessment
Malaysia Highway Capacity Manual (MHCM) 2006 & 2011
Road Traffic Volume Malaysia (RTVM)
Various Arahan Teknik Jalan (ATJ) and local authority guidelines related to traffic design

Traffic Impact Assessment Study

Traffic volume counts
Internal and external traffic circulation
Optimal junction configuration recommendations
Traffic impact analysis from development generated traffic volume
Pedestrian and public transport facilities recommendations
Carpark and service vehicle circulation and swept path analysis

Transport Masterplan Study

Traffic volume counts
Road alignment & hierarchy proposal
Road network planning for the study area
Traffic model building and analysis
Optimal junction configuration recommendations
Traffic option testing for phased development
Traffic impact analysis from development generated traffic volume
Pedestrian and public transport facilities recommendations
Preliminary plot access suggestions

Road and Highway Study

Traffic volume counts & travel time survey
Preliminary desktop traffic forecasting
Traffic model building and analysis
Traffic impact assessment on highway interchanges
Strategic toll charging proposal and toll booth recommendations.
Peak hour & daily traffic volume forecast including revenue forecast

Public Transport Study

Traffic volume counts & journey time survey
Preliminary desktop traffic forecasting
Traffic model building and analysis
Traffic impact analysis and traffic circulation study on rail stations
Peak hour and daily ridership projections
Park and ride recommendations
Feeder bus service route recommendations
Modal split analysis and result

Our Experience

NATIONAL LEVEL

National Physical Plan 1 & 4 - Transport

East Coast Rail Link (ECRL) – Ridership

Mid Speed Train Service between
Padang Besar and Johor Bahru

Southern Economic Spine Study – Transport

Ridership Review of Rapid Transit Link between
Johor Bahru & Singapore

Our Experience (Central Region)



Kuala Lumpur, Selangor, & Negeri Sembilan

Traffic Impact Assessment Studies

KL Wellness City (KLWC), Bukit Jalil
 Riviera Bangsar Mixed Development, Bangsar
 Vanke (Bukit Nenas) Development, Kuala Lumpur
 Plaza Rakyat Redevelopment, Kuala Lumpur
 Cyberjaya 8 / Angkasa Icon City, Cyberjaya.
 Pavilion Damansara Town Centre (DTC), Kuala Lumpur
 Jalan Stonor Development and Plot Ratio Study, KL
 MVV (Hamilton Plot 4,5 &6)
 Nilai Halal Hub, Bandar Baru Nilai
 Ibu Pejabat Polis Klang
 Columbia Hospital Expansion, Klang
 Tenaga Nasional Berhad HQ, Bangsar

Transport Masterplan Studies

Kwasa Damansara, Petaling
 Tun Razak Exchange, Kuala Lumpur
 KL Eco City, Kuala Lumpur
 Malaysia Vision Valley, Negeri Sembilan
 Setia Federal Hill, Bangsar
 Garden City, Kuala Lumpur
 Bukit Jalil City Centre, Bukit Jalil
 W City OUG, Kuala Lumpur
 Subang Skypark Terminal, Subang
 Taman Wahyu Development, Kepong
 Bukit Bintang City Centre, Kuala Lumpur

Strategic & Special Studies

Traffic Dispersal Project for Jalan Tun Razak
 Signage Study Duke Phase 2 Expressway
 Signage Study for KL Sentral
 Circulation Study for Law Yat Development in Bukit Bintang
 Study on the Closure of Jalan Bukit Bintang during Events
 Study for the Relocation of Express Bus, Taxi Waiting Area at KL Sentral
 Malaysia Vision Valley Interchange Study, Negeri Sembilan
 TIA on the TMP for Setiawangsa Pantai Expressway
 Study on the connection between Bamboo Garden Development and DUKE
 Internal Circulation for Sqwhere Development, Sg. Buloh

Privatised Highway Studies

Duta Ulu Kelang Expressway (DUKE)
 Sri Damansara Link (SDL)
 Tun Razak Link (TRL)
 Setiawangsa Pantai Expressway (SPE)
 DUKE Phase 2a
 East Klang Valley Expressway (EKVE)
 Lebuhraya Shah Alam (KESAS)
 Guthrie Corridor Expressway (GCE)
 Lebuhraya Kemuning Shah Alam (LKSA)
 Ampang Elevated Highway (AKLEH)
 Kajang Dispersal Link Expressway (SILK)

Public Transport Studies

TIA Study for:
 Klang Valley MRT3 (Circle Line)
 Shah Alam LRT Line (LRT3)
 Ampang & Kelana Jaya LRT Line Extension
 Ridership Study for:
 MRT3 (Circle Line) Feasibility Study
 Johor Bahru LRT
 East Coast Rail Link (ECRL)
 Shah Alam LRT Line (LRT3)
 Sunway Bus Rapid Transit (BRT)
 KL Monorail Extension
 Putrajaya Monorail
 Proposed Study of Bus Routing Integration System in Klang Valley

Our Experience (Northern Region)

Traffic Impact Assessment Studies

Setia Fontaines, Bertam
Private Hospital, Bertam
Kg. Selamat Industrial Park
Spirit of Perai Residential Developments, Sg. Dua
KDU College, Batu Kawan
Penang Designer Village, Batu Kawan
Osram Factory, Batu Kawan
IKEA, Batu Kawan
Gudang Motorsikal MForce, Batu Kawan
Eco Meadows, Bukit Tambun
Intel Factory, Bayan Baru
Setia Green, Bayan Lepas
Intel Kulim High Tech Park
Al-Bukhary Higher Learning Centre, Alor Setar
Universiti Teknologi Petronas, Perak



Penang, Perlis, Kedah, & Perak

Transport Masterplan Studies

Batu Kawan Township Masterplan
Butterworth Reclamation Development
Penang Sentral Development
Straits Trading Development, Butterworth
ASPEN Development, Batu Kawan
Utropolis, Batu Kawan
Queensbay Mall Development, Bayan Baru
Immigration, Customs, and Quarantine Complex,
Bukit Kayu Hitam
Kuah Ferry Terminal, Langkawi

Special/ Strategic Studies

Strategic Development Plan for Accelerating
Economic Transformation in Perlis

Penang Bridge 3rd Lane Widening

Proposed Interchange Study for Batu Kawan
on North South Expressway

Traffic Forecast Review for Penang Bridge

Privatised Highway Studies

Butterworth Outer Ring Road (BORR)
Jelapang - Selama -Batu Kawan Highway (JELAS)
Sungai Petani - Changkat Jering Expressway (SPACE)
Northern Inland Corridor Expressway (NICE)
Penang Outer Ring Road (PORR)
West Coast Expressway Feasibility Study (WCE)

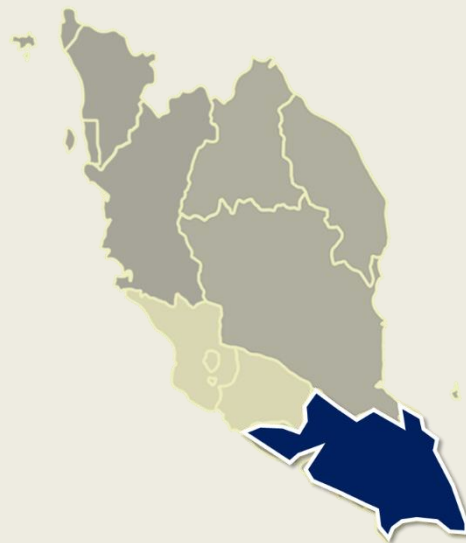
Public Transport Studies

Ridership Study for Penang Monorail
Ridership & TIA Study for Penang Sky Cab (Cable Car)
Temporary Bus Hub for Penang Sentral

Our Experience (Southern Region)

Traffic Impact Assessment Studies

South Key Megamall, Johor Bahru
Plaza Best World, Johor Bahru
Setia Tropika Square, Johor Bahru
JUSCO Bukit Indah
Setia Eco Gardens, Johor Bahru
Puteri Harbour, Nusajaya
Oil Terminal at Tanjung Langsat Port
TESCO Hypermarket, Kulai
Senai Transport Hub
R5 Regional Commercial Centre, Nusajaya
Biocity, Nusajaya
Nusajaya West Mixed Development



Johor & Melaka

Transport Masterplan Studies

Johor State New Administration Centre (JSNAC),
Bandar Nusajaya
Southkey Township, Johor Bahru
Lido Boulevard
Bandar Nusajaya
Danga Bay
Ledang District New Administrative Centre (LDNAC),
Muar
Medini Township, Nusajaya
Senai Transport Hub

Special/ Strategic Studies

Immigration, Customs, and Quarantine Complex,
Johor Bahru

Interchange Study for Perling Expressway

Interchange Study for Eastern Dispersal Link

Tanjung Puteri Bridge Traffic Management

Second Access for Universiti Teknologi Malaysia

Privatised Highway Studies

West Coast Expressway (Muar - Gelang Patah)

Eastern Dispersal Link (EDL)

Senai Desaru Expressway

Lebuhraya Pantai Timur Fasa 4

Public Transport Studies

Review of Rapid Transit System (RTS) Link
Ridership Study for Johor Bahru LRT
Johor Bahru Public Transport Masterplan Study for
UPEN
Permas Jaya Transport Hub

Our Experience (East Coast Region)

Traffic Impact Assessment Studies

Manek Urai Petrol Station, Kuala Krai

Central Spine Road Package 2 – Gua Musang

Road Upgrading Study in Tok Bali

Road Upgrading and Widening from Sg Lakit to Gua Musang of Central Spine Road

Commercial Centre at Rantau Petronas, Kerteh

Traffic Management Plan for Signalised Junction J1 at Rantau Mall, Kemaman

Upgrading of the Existing Road from Sg Lembing to Junction of Kuantan Exit LPT, Kuantan

Housing Development at Tengkolok (Kampung Raja), Tanah Rata

Development of Semi-D Vilas (438 units) and Service Apartments (3000 units) at Genting Sempah

Plot 1 (Parcel R1) Consists of Service apartment, a Part of Lot PT 23603, Mukim Bentong



Kelantan, Terengganu, & Pahang

Transport Masterplan Studies

Phase 2 Automotive Industrial Park, Pekan-Peram Palm Oil Industrial Cluster (POIC), Kuantan Port City

Concept Transport Masterplan Study for Proposed Development for Kuantan Waterfront, Kuantan

Transport Masterplan Study for Proposed Development for Parcel A - E, Kuantan

Special/ Strategic Studies

Kajian Rancangan Tempatan Daerah Marang (2007-2015), Terengganu

Traffic Circulation Study for East Coast Mall, Kuantan

Traffic Access Options Study for Proposed Kuantan Airport Site Location

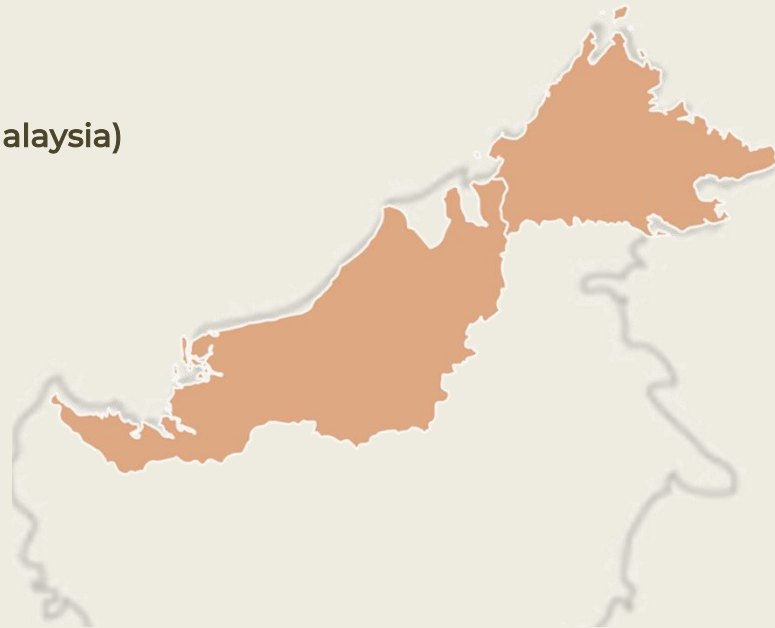
Highway Studies

Central Spine Road between Kota Bharu and Gua Musang

Public Transport Studies

Ridership Study for East Coast Rail Link (ECRL)

Our Experience (East Malaysia)



Traffic Impact Assessment Studies

1-Borneo Development
Low-Cost Housing at Kampung Kalansanan, Inanam
Karamunsing Kompleks
Lot 2,3,5, and 6, Tanjung Lipat, Kota Kinabalu
Sandakan Harbour Square Hotel
TIA for Mukah Science Park

Sabah & Sarawak

Transport Masterplan Studies

Aeropod, Kota Kinabalu
Transport Masterplan Study for Tunoh
Feasibility Study for Kuching Urban Transport Study
Transport Masterplan for Kapit

Special / Strategic Studies

Kota Kinabalu Environmental Improvement
Masterplan - One Way Traffic System
SUDP Study for Sustainable Urban Development
Program for Sabah
Car Parking Analysis for Kota Kinabalu - SUDP Study
Traffic Review of Traffic System in Sibu Town
Sustainable Urban Development Project (SUDP) for
the Sibu Township

Highway Studies

Traffic Study for Pan Borneo Highway, Sabah - Kota
Kinabalu Outer Ring Road (KKORR)
Pan Borneo Highway (Marudi – Lawas)
Traffic Review of Tun Salahuddin Toll Bridge
in Kuching
Jalan Segama Northern Bypass (POIC), Lahad Datu

Public Transport Studies

Public Transport Masterplan Study for Kota Kinabalu,
Tawau and Sandakan

Our Registration

Ministry of Finance

Registration Ref : 465-00000815

Industry Code : 340201 (Kajian Rangkaian Pengangkutan / Transport Planning)
340202 (Kajian Trafik / Traffic Planning)

Our Team



Management

Ir Dr Tai Tuck Leong, Chairman

MIEM, P.Eng (PEPC)
Ph.D. in Civil Engineering (Transportation), University of Canterbury, New Zealand, 1987
B.Sc. in Civil Engineering with 1st Class Honours, Queen Mary College, University of London, 1978
Years of Experience: more than 35 years

Ir Alex Chew Choon Aik, General Manager

MIEM, P.Eng
B.Eng. – Civil, Queensland University of Technology, 2000
Years of Experience: 21 years

Norashimah binti Yahaya, Deputy General Manager

M.Sc (Transport Planning), UTM, 1995
Advance Diploma in Business Administration (Transport), UiTM, 1993
Years of Experience: 26 years

Nor Rosmawati binti Razali, Manager (Project Planning)

B.Eng. (Hons) Civil, USM, 2007
Years of Experience: 14 years

Dr Tan Swee Poh, Finance Advisor

Ph.D. University of Otago, NZ
M.Sc. University of London, UK
B.Sc. University of Nottingham
Years of Experience: more than 27 years

Stella Yap Pau Choo, Finance Manager

Years of Experience: 6 years



Engineers & Planners

Siti Norrabihah binti Ramli, Senior Transport Planner

B. Urban and Regional Planning (Hons), UTM, 2010
Years of Experience: 12 years

Nazatul Emma binti Danuri, Senior Traffic Engineer

B.Eng. (Hons) Civil, USM, 2007
Years of Experience: 11 years

Muhammad Fariz bin Hashim, Senior Traffic Engineer

B.Eng. (Hons) Civil, UiTM, 2012
Diploma in Engineering (Civil), UiTM, 2009
Years of Experience: 10 years

Wan Nur Aliffa binti Wan Ramli, Transport Planner

M.Sc (Civil - Transportation and Highway), UTM, 2010
B. Urban and Regional Planning, UTM, 2008
Years of Experience: 12 years

Mohd Shah Ezwan bin Hashim, Traffic Engineer

M.Sc (Transport and Highway Engineering), UPM, 2013
B.Eng. (Hons) Civil Engineering, UNIMAS, 2011
Years of Experience: 10 years

Hazwaruaida binti Muhammad, Traffic Engineer

M.Sc (Civil Engineering), USM, 2014
B.Eng. (Hons) Civil, USM, 2010
Years of Experience: 8 years

Raja Zhafri Iskandar bin Raja Rusli, Transport Planner

B. Urban and Regional Planning (Hons), UIAM, 2015
Years of Experience: 7 years

James Ling Zhi Yang, Traffic Engineer

M.Eng. (1st Class Honors) Civil Engineering, University of Nottingham, 2019
Years of Experience: 3 years

Thellen Kumar a/I K Puspanathan, Traffic Engineer

B. Civil Engineering (Honors), Monash University, 2021
Years of Experience: 1 year



Supporting Staff

Andrea Lee, Senior Account & Admin Executive

Years of Experience: more than 25 years

Margaret Cheong, Senior Secretary

Years of Experience: more than 25 years

Nooraida Suriani binti Ahmad Sabri, Admin & Collection Executive

Years of Experience: 8 years

Zafirah binti Zakaria, Account Assistant

Years of Experience: 6 years

Jamri bin Kassim, Head Draughtsperson

Years of Experience: 24 years

Mohd Fuad bin Abdul Rahman, Senior Surveyor/Draughtsperson

Years of Experience: 15 years

Husaini bin Ibrahim, Draughtsperson

Years of Experience: 7 years

Mohd Nazri bin Nawawi, Surveyor/Draughtsperson

Years of Experience: 7 years

Mohd Firdaus bin Mohd Suki, Surveyor/Draughtsperson

Years of Experience: 3 years

Mohd Asyraf bin Ibrahim, Office Support/Dispatch

Years of Experience: 1 year

What's Next?

Traffic and Transport Studies are needed to ensure the vehicular and pedestrian traffic generated from new developments are facilitated with optimal traffic management and transport planning solutions to reduce the traffic impact in the study area.

As an added service, all of our Traffic Studies includes internal carpark circulation studies, swept analysis, and parking boom gate analysis. As needed by some local authorities, 3D traffic micro simulation modelling can also be added as additional scope in the traffic study.

Apart from being a requirement for development planning submissions, traffic consultancy services are also sought after for improvement to traffic circulation, public transport ridership forecast, highway traffic forecast, urban transport masterplans, and other projects where vehicle and pedestrian flow needs to be planned.

Feel free to contact and visit us for more information on the traffic and transport consultancy services that we offer. We will be glad to assist in customising a study scope specific to your project development needs.



PERUNDING TRAFIK KLASIK SDN. BHD

(300560-H)

L13A-01-02
Level 13A PJX HM Shah Tower,
16A Persiaran Barat,
46050 Petaling Jaya,
Selangor Darul Ehsan

Telephone: +603 7932 3266
Fax: +603 7932 3261

Email: trafik@ptk.my
Website: www.ptk.my



PERUNDING TRAFIK KLASIK SDN. BHD
(300560-H)